

# Johnnie Wear

## Dress Code Resource



Johnstown High School and Johnstown Middle School students are required to follow the “Johnnie Wear” dress code. This guide is meant to be used as a resource for the dress code requirements for JHS & JMS. The “Johnnie Wear” Dress Code fosters a positive educational environment, reduces social conflict, saves instructional time, cultivates unity and school pride and promotes safety. The full dress code description can be found in both the JHS & JMS handbooks. The last page of this resource provides suggested retailers.

# Pants

**Colors:** khaki, tan, black, gray, red, and navy blue

**Style:** Dockers or dress type; no athletic pants, overly tight pants, yoga pants, or leggings

**Fabric:** (acceptable): cotton, polyester, polyester-cotton blend, and twill

**Fabric:** (unacceptable): blue denim, sweats, velour, and spandex

**Length:** cannot drag on floor

## Approved:



## Not Approved:

Blue Jeans



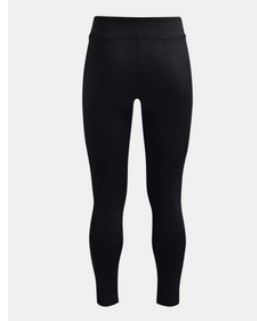
Sweat Pants



Velour



Leggings



Athletic Pants  
(Joggers)



White Pants



# Shorts

**Colors:** khaki, tan, black, red, gray, and navy blue

**Fabric:** (acceptable): cotton, polyester, polyester-cotton blend, and twill

**Fabric:** (unacceptable): blue denim, sweats, velour, and spandex

**Length:** just above the knee, no athletic shorts or overly tight shorts

## Approved:



## Not Approved

Athletic/Gym Shorts



Too short



# Skirts / Dresses / Jumpers

**Colors:** khaki, tan, black, red, gray, and navy blue

**Length:** just above the knee, straight or pleated; no slits

In addition all pants, shorts, skirts, dresses, and jumpers will be fitted and hemmed

## Approved:



## Not Approved

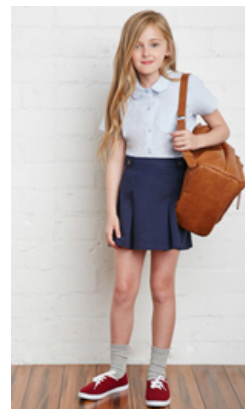
Patterned



White Dresses



Too short



# Shirts

**Colors:** red, gray, tan, white, navy blue, and black (no blue denim, stripes, or patterns)

**Style:** short or long-sleeved polos with a collar, turtlenecks may be worn under polo shirts, short or long sleeved oxfords; no more than top two buttons unbuttoned

## Approved:



\*Color blocking is allowed as long as it is the approved colors and not striped or patterned.

## Not Approved:

Crewneck T-shirt



Sky blue shirt



Royal blue shirt



Striped shirt



Patterned Shirt





# Sweaters / Vests

**Colors:** red, gray, tan, white, navy blue and black (no blue denim, stripes, or patterns)

**Style:** short or long sleeved polos with a collar, turtlenecks may be worn under polo shirts, short or long sleeved oxfords; no more than top two buttons unbuttoned.

## Approved:



A single manufacturer's emblem/logo (that is sewn into the material) no more than 2 ¼ inches is permitted on bottoms and tops provided it is school appropriate. School related activity insignia, labels, logos or emblems located on the upper left/right side of tops.

## The following are prohibited:

- Tattered, dirty, torn, and/or excessively tight clothing
- Sunglasses without a physician's note
- Exposed midriffs
- Undergarments (excluding t-shirt collars)
- Head gear (caps, hats, sweatbands, bandanas, etc.)
- See-through clothing
- Outerwear
- Heavy metal chains
- Clothing with hoods
- Slippers
- Clothing with pictures and/or wording that is not school spirit wear (clothing that promotes school and/or athletic community)
- Unnatural hair colors or styles that draw attention away from instruction
- Tattoos that include language or images not aligned with our student code of conduct



# Spirit Wear

Johnstown spirit wear can be worn **over a collared shirt**. Johnstown spirit wear does not need to have logos in the corner of the shirt and does not have logo size restrictions. [Click here to purchase spirit wear from the Johnstown Athletic Boosters.](#) Shop closes on August 15, 2024.



## Suggested Retailers

The retail stores listed below have school uniform search options. Click on the links below to see their school uniform clothes available. Please note that the clothing choices must meet the “Johnnie Wear” dress code requirements as outlined in the JMS/JHS Handbooks. Not everything promoted on the retailers’ websites complies with the “Johnnie Wear” dress code.

[\*\*Aeropostale\*\*](#)

[\*\*Amazon\*\*](#)

[\*\*Children's Place\*\*](#)

[\*\*French Toast\*\*](#)

[\*\*GAP\*\*](#)

[\*\*JC Penney\*\*](#)

[\*\*Kohl's\*\*](#)

[\*\*Old Navy\*\*](#)

[\*\*Target\*\*](#)

[\*\*Walmart\*\*](#)